



SANTA PAULA (KSZP) Airport



SANTA PAULA TRAINING & AEROBATIC BOX

See the PRACTICE AREA Section on the Website for more information.

MONITOR & COMMUNICATE your Position and Flight Track On 122.775



Cafe Society: Flight 126 Cafe achieves liftoff at Santa Paula Airport

**The PATTERN at SANTA
PAULA is NON-STANDARD**

The Suggested Arrival Flight
Tracks Follow:

Reference:
santapaulaairport.com

Inbound from the Saticoy Bridge

Pattern is NON-STANDARD



Inbound from the North

Upwind over the City at 1500 msl

Runway 22: WEST Wind / Calm Wind

Runway 22 : West Wind / Calm Wind

Use frequency 122.9 – Be vigilant for aircraft without radios.

Please, no 45 degree entries over the ridge to downwind, or overhead crosswind entries from upwind. Please extend your upwind to Peck Rd., just to the west of the trailer park before turning crosswind.

Pattern altitude is 850' MSL

ARRIVALS

Aircraft arriving from the south, southwest, west and northwest:

1. Join a long left downwind for runway 22.
2. Report Saticoy bridge (6.25mi SW) and/or the junkyard (3mi SW).
3. Descend to pattern altitude (850' msl)
4. Report left downwind over the golf course, left base and final.

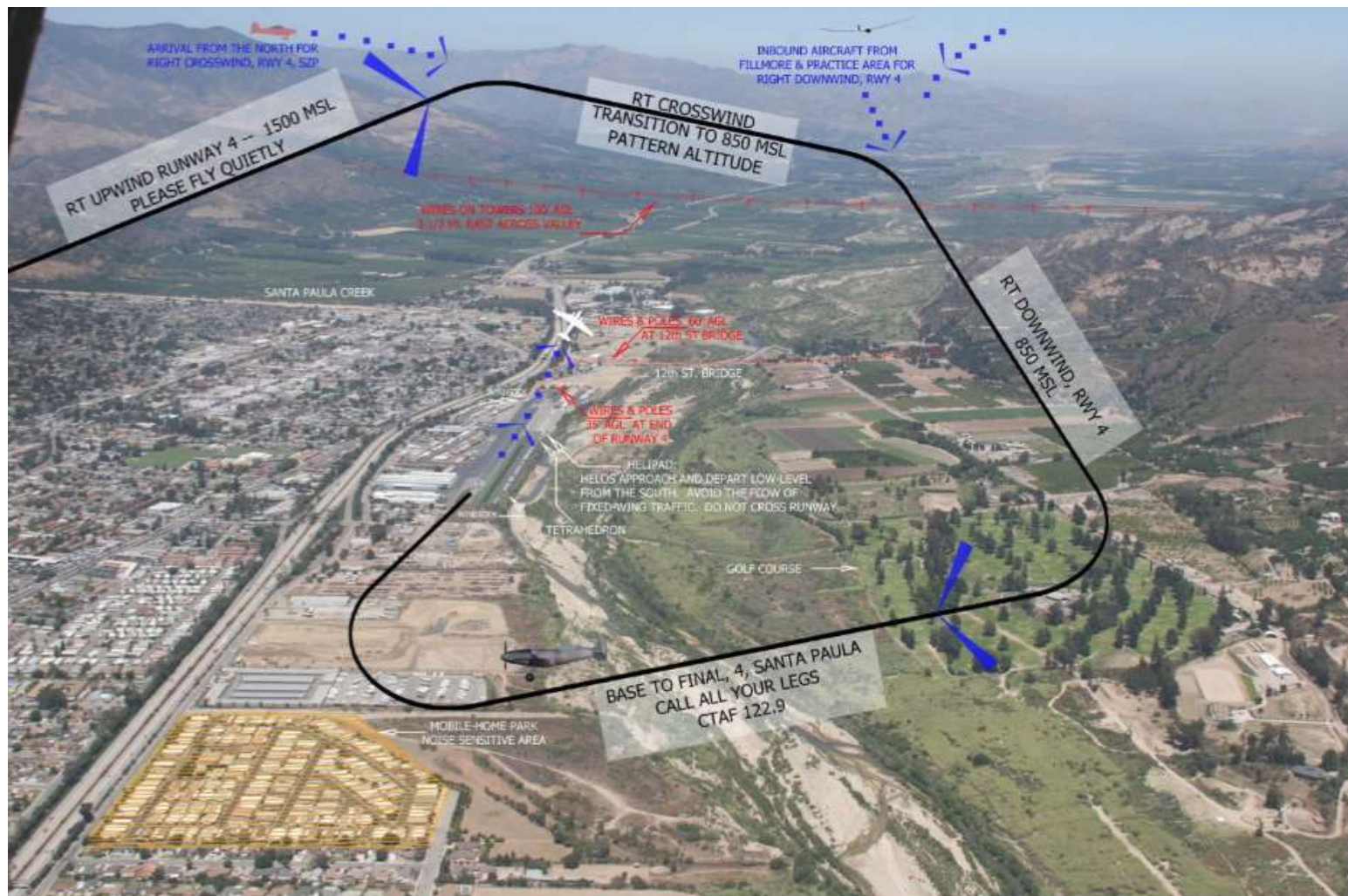
Aircraft arriving from the Southeast, east, northeast and north:

1. Report upwind over the city at 1500' msl
2. Report left crosswind at Peck Rd (1.5mi west)
3. Descend to pattern altitude (850' msl)
4. Report left downwind over the golf course, left base and final.

DEPARTURES

Westbound departures, please avoid direct overflight of noise sensitive mobile home park. Be vigilant for arrival traffic on long left downwind for Runway 22. Eastbound departures, be alert for intensive aerobatic training beginning 3mi east of SZP. Pilots are requested to announce their position and monitor on 122.775.

Upwind over the City at 1500 msl



Runway 4: EAST Wind

Pattern is NON-STANDARD

Runway 04 : East Wind

Use frequency 122.9 – Be vigilant for aircraft without radios.

Please, no 45 degree entries over the ridge to downwind, or overhead crosswind entries from upwind. Please extend your upwind to Santa Paula Creek before turning crosswind.

Pattern altitude is 850' MSL

ARRIVALS

Aircraft arriving from the southwest, west and northwest

1. Fly upwind over the city at 1500' msl
2. Turn crosswind at or beyond Santa Paula Creek
3. Descend to pattern altitude (850' msl)
4. Report right downwind, right base and final

Aircraft arriving from the South, Southeast, east, northeast and north:

1. Join an extended right downwind for 04
2. Report Crossing power lines (3.5mi east)
3. Descend to pattern altitude (850' msl)
4. Report right downwind, right base and final

DEPARTURES

Eastbound departures, please be vigilant for arrival traffic on long right downwind for Runway 04. Be alert for intensive aerobatic training beginning 3mi east of SZP. Pilots are requested to announce their position and monitor on 122.775.



Dimension: 60 x 60ft / 18.3 x 18.3m

Traffic pattern: Left

Arrival / Departure: Approach and depart from the south. Avoid the flow of fixed wing traffic.

Warnings: Do not overfly the runway. Do not cross the Runway for fuel! Call fuel truck at 805-415-0223

Heliport at Santa Paula