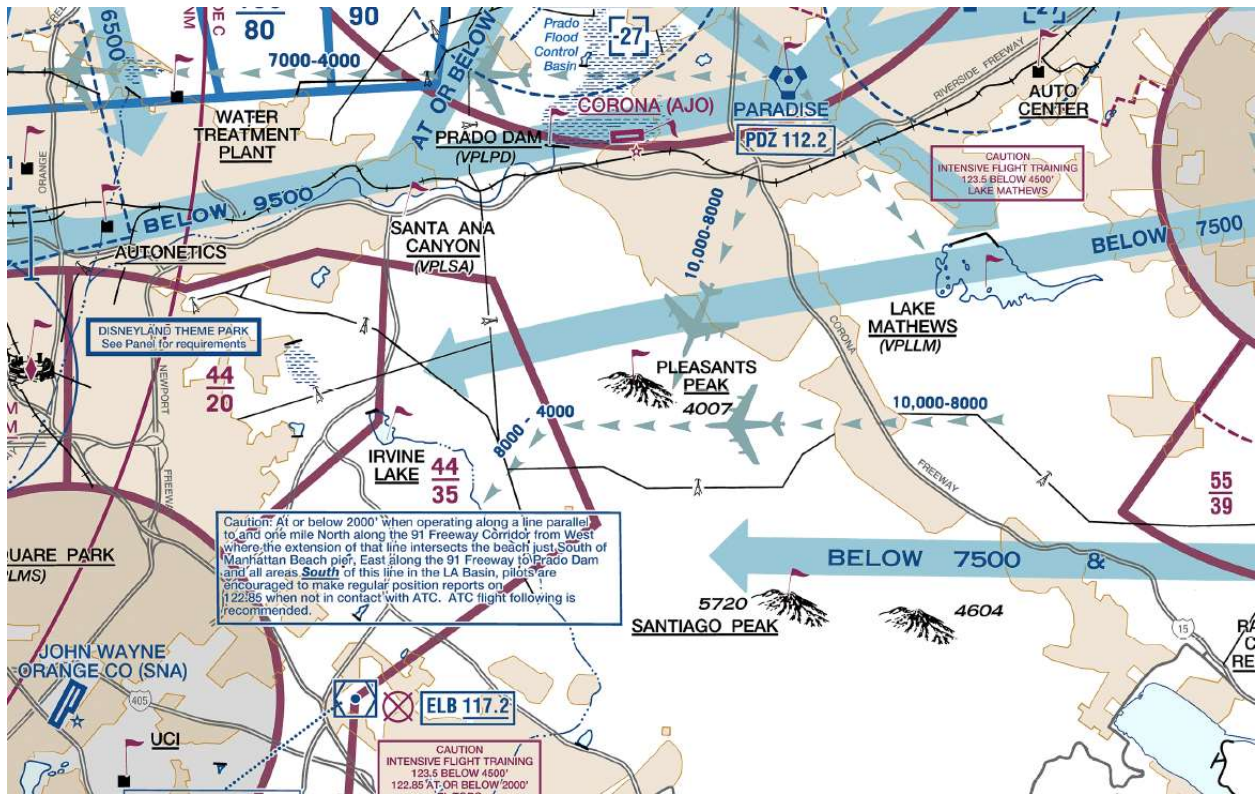


# POTENTIAL AIRSPACE ROUTE CONFLICT AND PROPOSED OPTIONS

KSNA ARRIVAL VIA

DSNEE THREE ARRIVAL (ATTACHED BELOW)



EXCERPT FLYWAY CHART LA TAC ED 77

ILLUSTRATES EAST WESTERLY FLYWAY ROUTES NORTH AND SOUTH OF PLEASANTS PEAK

SUGGESTED BY AIRLINE CAPTAIN Mike Jesch:

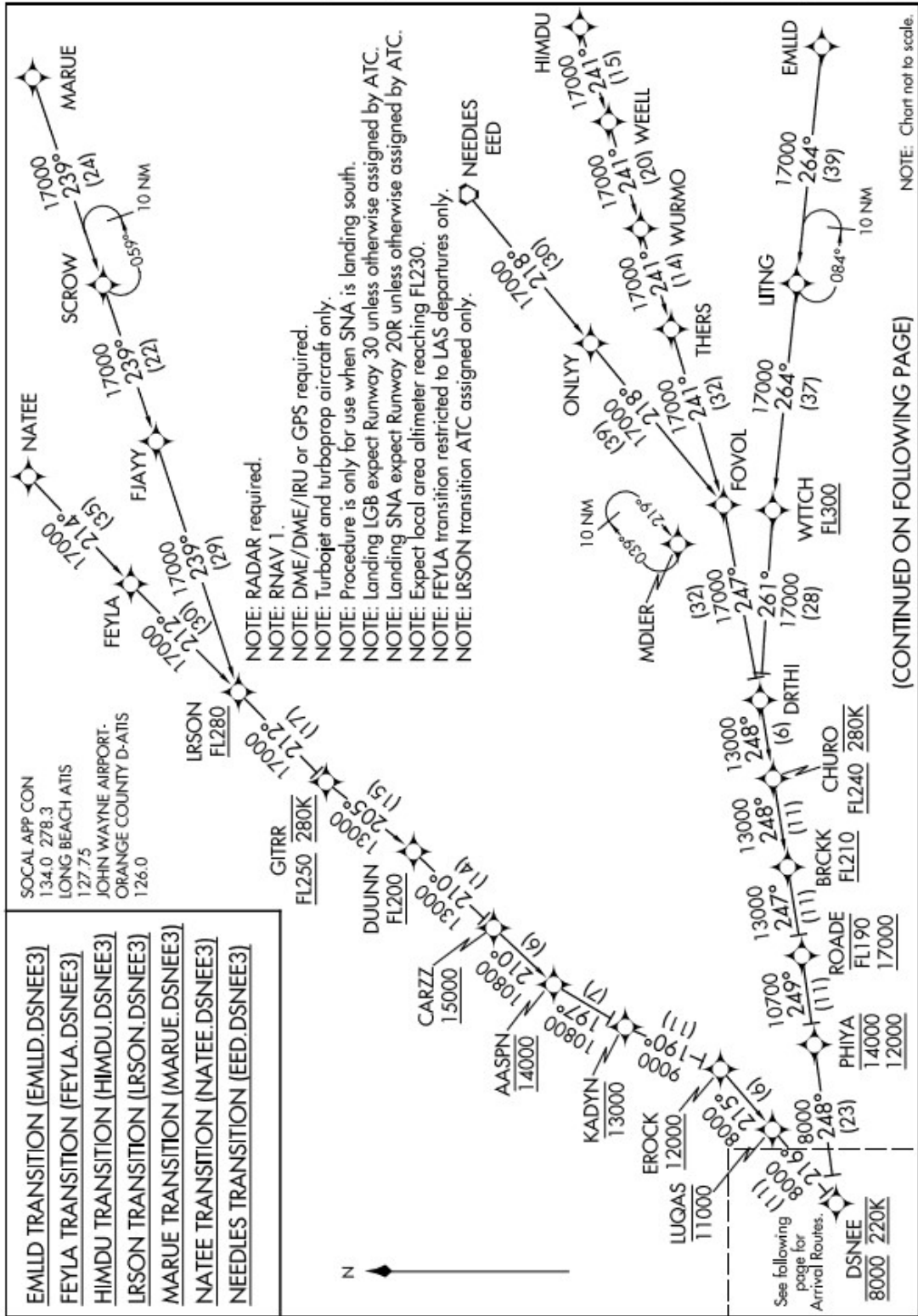
"...on the east/west route that is just north of "Pleasants Peak", 7500 is a terrible altitude to be at. It's right on the DSNEE arrival path into SNA, and aircraft cross DSNEE intersection at 8000, then descend to 7600 just about abeam that peak. I would suggest that aircraft along that route should be south of the peak instead (but avoid flying over Lake Elsinore due to the jump zone), or north, in the Santa Ana Canyon over the 91 freeway.

THE DSNEE THREE ARRIVAL ROUTE FOLLOWS:

DSNEE THREE ARRIVAL (RNAV) Transition Routes

LONG BEACH, CALIFORNIA

SW-3, 21 JUN 2018 to 19 JUL 2018



DSNEE THREE ARRIVAL (RNAV) Transition Routes

LONG BEACH, CALIFORNIA

SW-3, 21 JUN 2018 to 19 JUL 2018