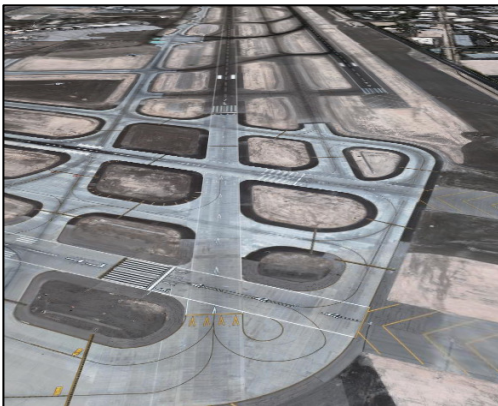


Runway Safety It's Everybody's Business



View from short final Rwy 19R



View from short final Rwy 7L

Runway Safety Best Practices

- Always be alert to airport vehicle and pedestrian activity.
- Ask for progressive taxi instructions if you're unfamiliar with the airfield.
- A good preflight check includes a comprehensive review of your departing/alternate/landing airport diagram.
- Review airport diagrams before taxiing or landing.
- Plan each flight chock-to-chock.
- Don't run checklists while taxiing during single-pilot operations.
- When taxiing during two-pilot operations, remember to have one pilot looking out of the cockpit at all times.
- Maintain situational awareness at all times—Practice the “see and avoid” rule—Observe and maneuver to avoid other aircraft.
- When receiving ATC instructions, listen carefully for similar-sounding aircraft call signs.
- When receiving air traffic instructions, listen carefully to what is being said instead of what you expect to hear.
- Look in both directions and final approach before receiving a clearance.
- Speak clearly and concisely to the air traffic control tower.
- Read back all hold instructions

**FEDERAL AVIATION
ADMINISTRATION**

**Federal Aviation
Administration**

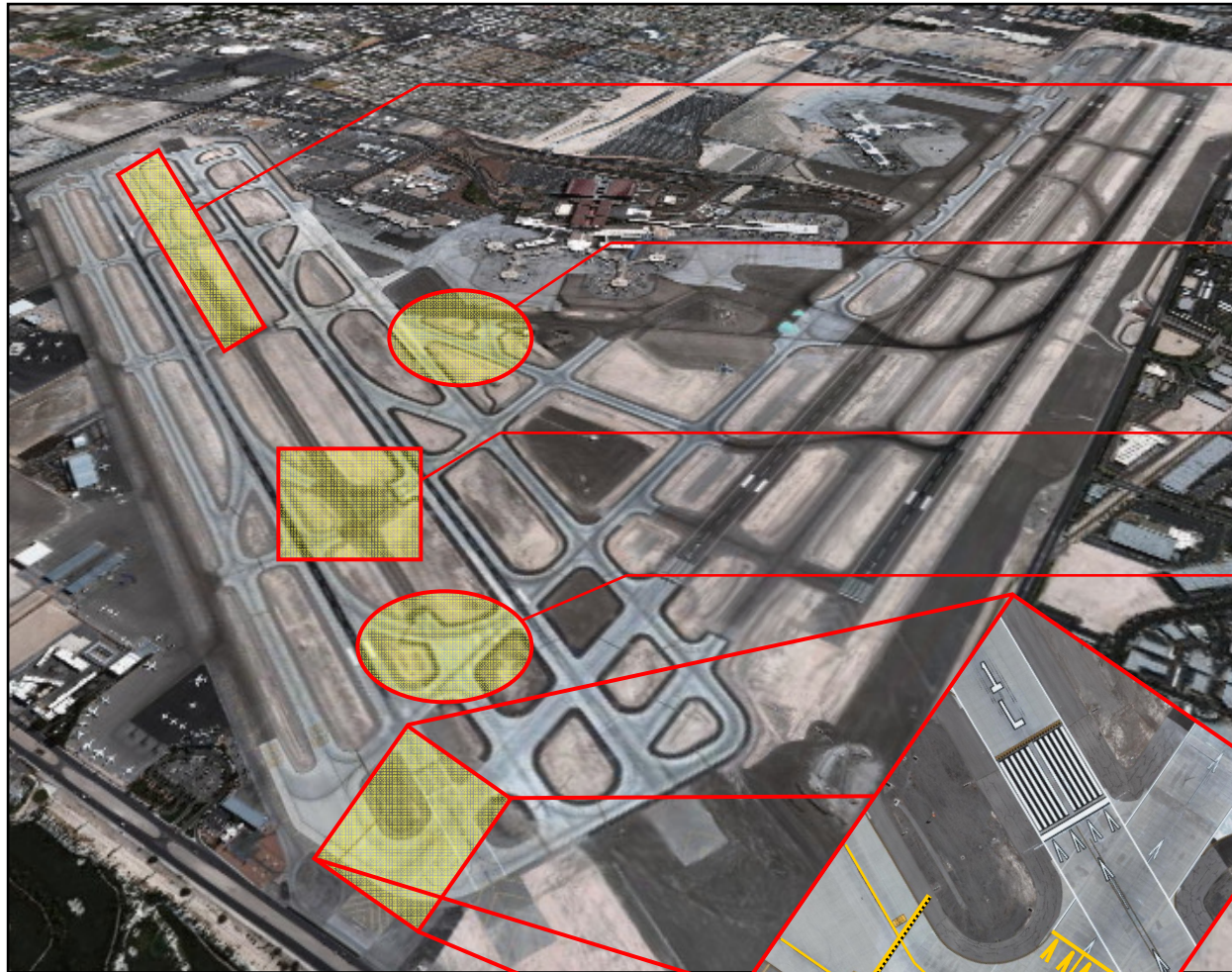
LAS

**Las Vegas
McCarran
Airport**

**Runway /
Taxiway
Safety
Information
March 2008**

Las Vegas McCarran Intl. (LAS) High Alert Intersections

NOTE: The highlighted areas pose a special challenge to pilots. Please review before operating your aircraft at LAS.



Twy E is often misidentified as a Runway. **ALWAYS VERIFY RUNWAY MARKINGS PRIOR TO DEPARTURE.**

Exiting the Ramp, use caution at Twy "S" not to cross the hold bars for Rwy 19L. Twy "S" intersects with Twys "D", "Z", and "G" which require a turn to the north or south.

Exiting Rwy 19L at "W," remain to the left side of Twy "W" to avoid entering Twy "U" and proceeding onto Rwy 19R.

Exiting Rwy 19L at "B," remain to the left side of Twy "B" to avoid entering Twy "Y" and proceeding onto Rwy 19R.

Hold short lines for Rwy 7L and Rwy 1L are co-located northwest of Rwy 7L. When departing full length Rwy 7L, use caution to verify runway heading and alignment with the proper Runway.

NOTE: Not for Navigation

If you would like more information, please contact the Clark County Department of Aviation.