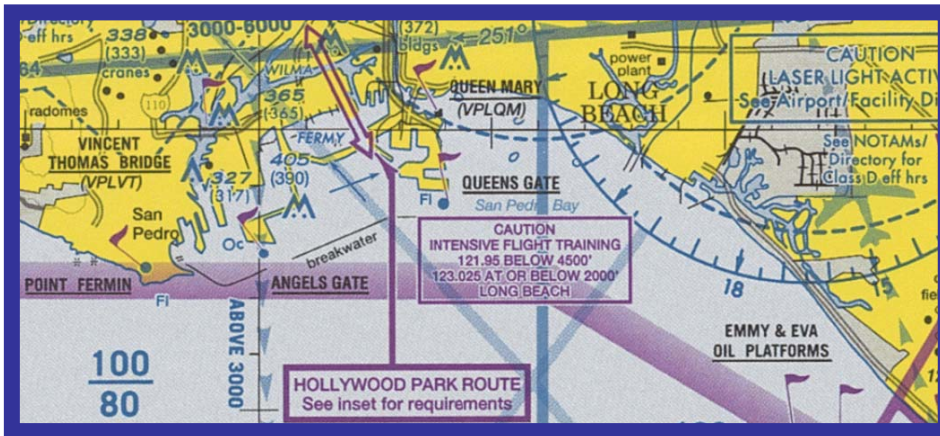


<b>AUWG SUBCOMMITTEE</b>	<b>Reference</b>	<b>Begin</b>	<b>End</b>	<b>Lead</b>	<b>Comments</b>
<b>1. TAC CHART</b>					
Queen's Gate	63-01	9/7/2011		Candy	Submit to Francie upon consensus.
Stadium TFR	63-02	9/7/2011		Candy	Submit to Francie upon consensus.

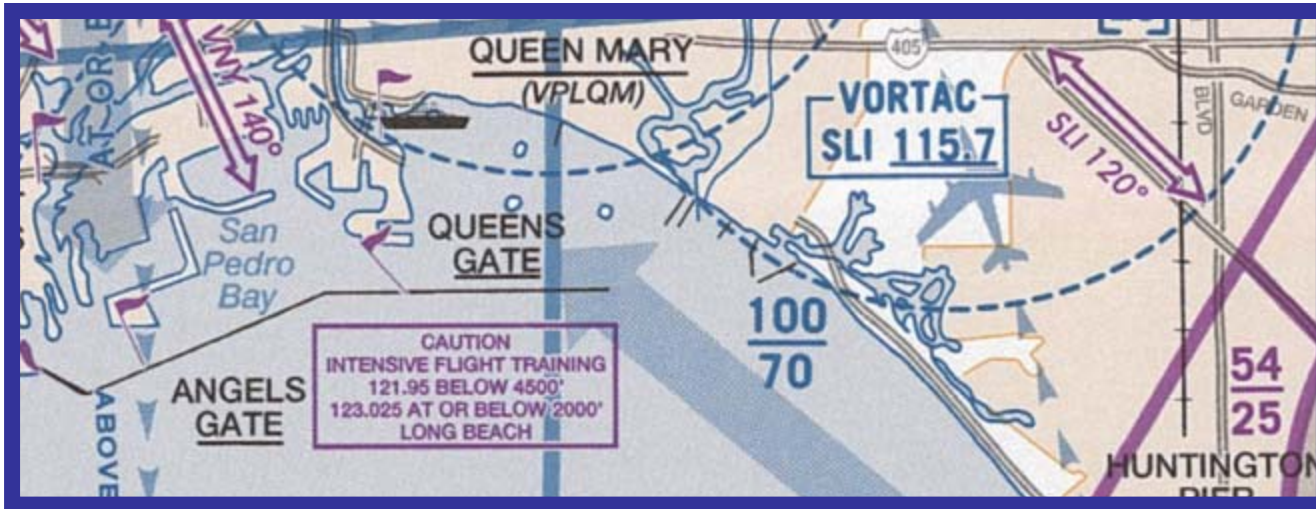
Edition 63

Edition 61



The breakwater east of Queens Gate is no longer depicted on the LATAC chart. The subcommittee has received requests to move the Long Beach caution box south to give pilots the orientation of breakwater.

RECOMMENDATION FOR FUTURE LOS ANGELES TAC CHART REVISION	REF	NAV SIDE	FLY WAYS	PANEL
Add symbol for Long Beach Harbor breakwater east of Queens Gate.	63-01	✓	none	none



Discussion:

The flyways side depicts the breakwater as continuous. May be trivial to request and obscure the main request, or could it be a safety issue?

FDC NOTAM 9/5151, called the Stadium TFR NOTAM, states, in part, “Commencing one hour before the scheduled time of the event until one hour after the end of the event, all aircraft and parachute operations are prohibited within a 3 nmr up to and including 3000 ft agl of any stadium having a seating capacity of 30,000 or more people where either a regular or post season Major League Baseball, National Football League, or NCAA Division One football game is occurring. This NOTAM also applies to NASCAR Sprint Cup, Indy Car, and Champ series races excluding qualifying and pre-race events.” The NOTAM is unclear if the seating capacity of a car racing venue is also 30,000 or more. Therefore, it may be prudent to stay 3000 AGL above all stadiums in lieu of better knowledge.

On the Los Angeles Terminal Area chart, there are several locations where the Stadium NOTAM (and the associated National Defense Airspace) may apply:

Team	Stadium	Location
University of California Los Angeles,	Rose Bowl	34N09'41"/118W10'03"
University of Southern California	LA Coliseum	34N00'47"/118W17'25"
Anaheim Angels	Angel Stadium	33N48'00"/117W53'24"
Los Angeles Dodgers	Dodger Stadium	34N04'12"/118W15'00"
Speedway	Location	
California Speedway	34N05'10"/117W29'55"	

There are five venues on the Los Angeles TAC chart that fall under FDC NOTAM 9/5151.

RECOMMENDATION FOR FUTURE LOS ANGELES TAC CHART REVISION	REF	NAV SIDE	FLY WAYS	PANEL
Add Stadium TFR information to a panel on the Los Angeles TAC chart.	63-02	none	none	✓

## Discussion:

This information is best disseminated on the TAC chart; if there is opposition to printing on the TAC chart, we can request it be published in the A/FD, adding the following internet information:

Pilots wanting to have the the most up-to-date information for venues covered under the Stadium NOTAM can consult the following websites:

- Major League Baseball games, based on published schedules from [www.mlb.com](http://www.mlb.com)
- National Football League games, (including pre-season) based on published schedules from [www.nfl.com](http://www.nfl.com)
- NASCAR (Nextel Cup Series, Busch Series, and Craftsman Truck Series), based on published schedules from [www.nascar.com](http://www.nascar.com)
- Formula 1 Series, based on published schedule from [www.formula1.com](http://www.formula1.com)