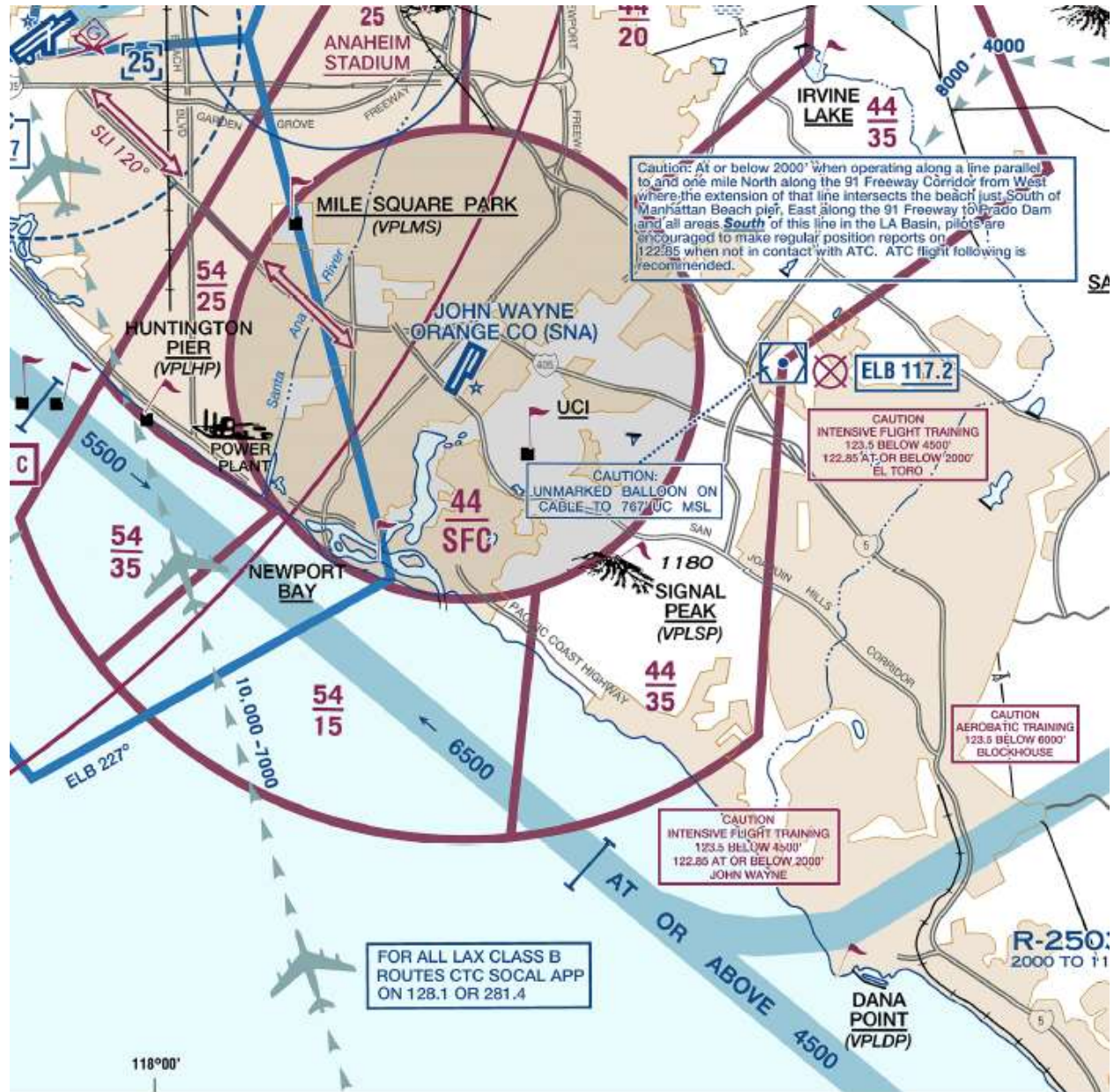


POTENTIAL AIRSPACE ROUTE CONFLICT AND PROPOSED OPTIONS

KSNA OFFSHORE FLYWAY ROUTE 5500'

PIGGN TWO DEPARTURE

STAY ONE DEPARTURE (ATTACHED BELOW)



EXCERPT FLYWAY CHART LA TAC ED 77

ILLUSTRATES the NORTHWEST / SOUTHEAST SUGGESTED FLYWAY ROUTE OFFSHORE KSNA

Suggested by Airline Captain Mike Jesch:

"...the northwest/southeast corridor just off the shoreline directly conflicts with especially the PIGGN and STAYY departures off of SNA, which go just offshore, climbing with a couple restrictions and turning left northeast bound, a little east of the ELB VOR. The top altitude of those departures is 13,000, but I frequently get altitude caps due to traffic transitioning along that route just offshore at, say, 6500 or 7500, and sometimes for aircraft southeast/northwest between DANAH intersection and the ELB VOR.

We have a crossing restriction ≥ 7000 essentially just off Laguna Beach, and on a heavy, hot day, sometimes it's a little close to make that restriction; sometimes we have to increase to full climb power."

THE PIGGN TWO DEPARTURE ROUTE

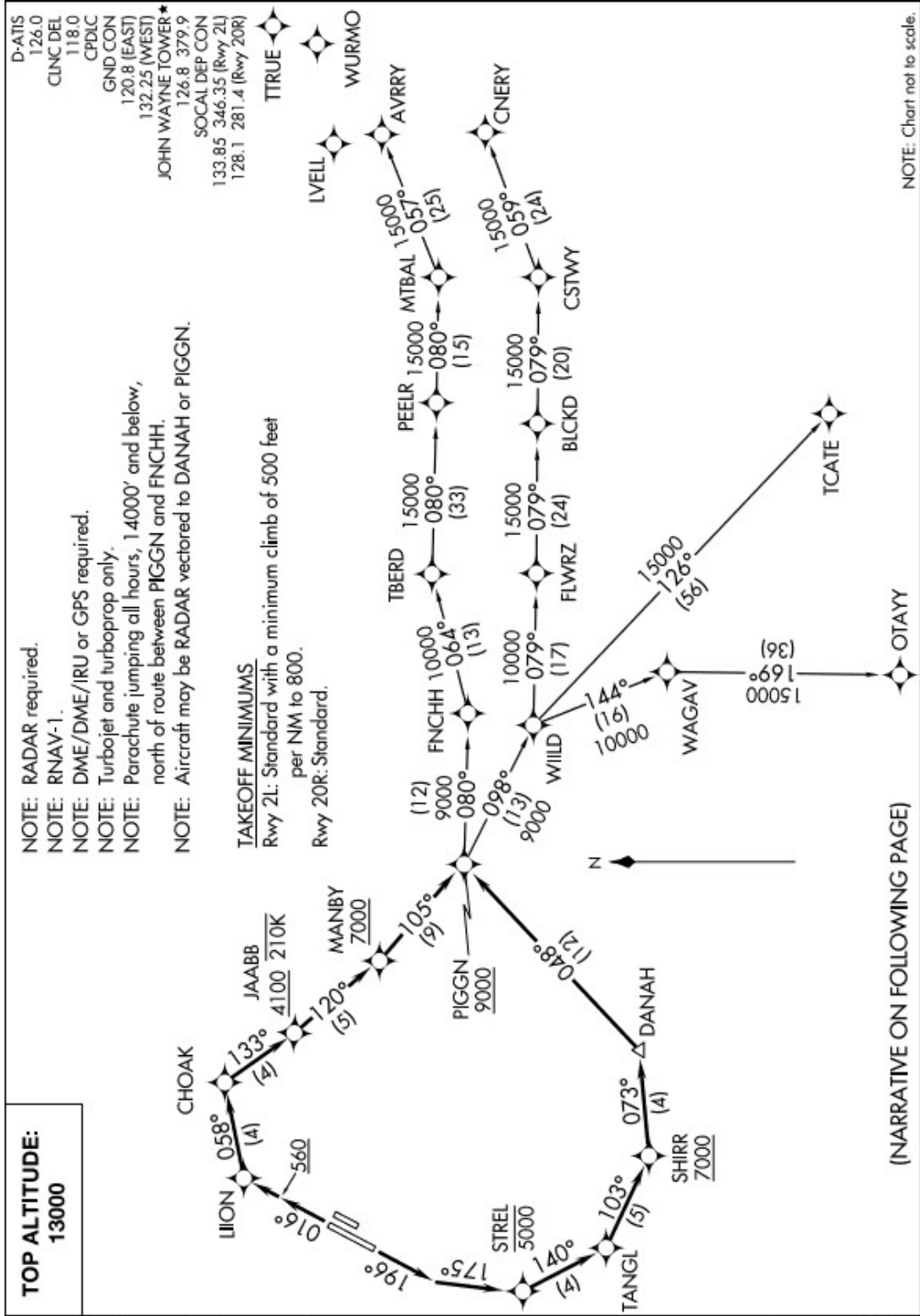
and the STAYY ONE DEPARTURE ROUTE Follow on the next pages:

(PIGGN2.PIGGN) 18088

PIGGN TWO DEPARTURE (RNAV)

JOHN WAYNE AIRPORT-ORANGE COUNTY (SNA)
AL-377 (FAA) SANTA ANA, CALIFORNIA

810Z JUN 18 to 19 JUN 2018 12 'E-MS



PIGGN TWO DEPARTURE (RNAV)
(PIGGN2.PIGGN) 17AUG17

SANTA ANA, CALIFORNIA
JOHN WAYNE AIRPORT-ORANGE COUNTY (SNA)

(NARRATIVE ON FOLLOWING PAGE)

SW-3, 21 JUN 2018 to 19 JUL 2018

(STAY1.STAY) 18088

STAY ONE DEPARTURE (RNAV)

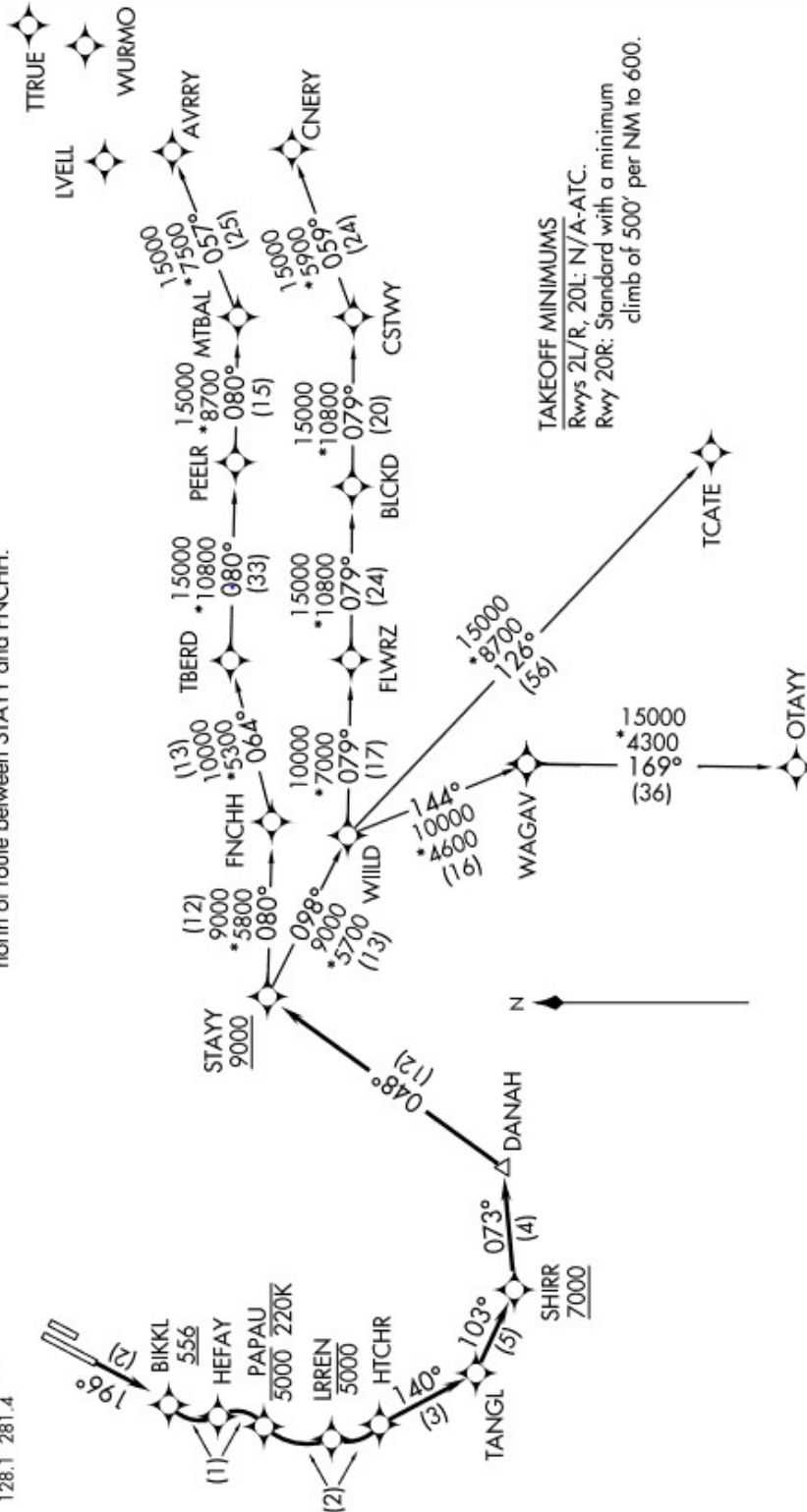
JOHN WAYNE AIRPORT-ORANGE COUNTY (SNA)
AL-377 (FAA) SANTA ANA, CALIFORNIA

810Z JUN 19 to 810Z JUN 12 'E-MS

**TOP ALTITUDE:
13000**

NOTE: RNP 1.
 NOTE: RF required.
 NOTE: GPS required.
 NOTE: RADAR required.
 NOTE: Turbojet only.
 NOTE: Parachute jumping all hours, 14000 and below,
 north of route between STAY and FNCHH.

D-ATIS 126.0
 CLNC DEL 118.0
 CPDLC
 GND CON
 120.8 (EAST)
 132.25 (WEST)
 JOHN WAYNE TOWER *
 126.8 379.9
 SOCAL DEP CON
 128.1 281.4



NOTE: Chart not to scale.

(NARRATIVE ON FOLLOWING PAGE)

SW-3, 21 JUN 2018 to 19 JUL 2018

STAY ONE DEPARTURE (RNAV)
(STAY1.STAY) 01FEB18

SANTA ANA, CALIFORNIA
JOHN WAYNE AIRPORT-ORANGE COUNTY (SNA)