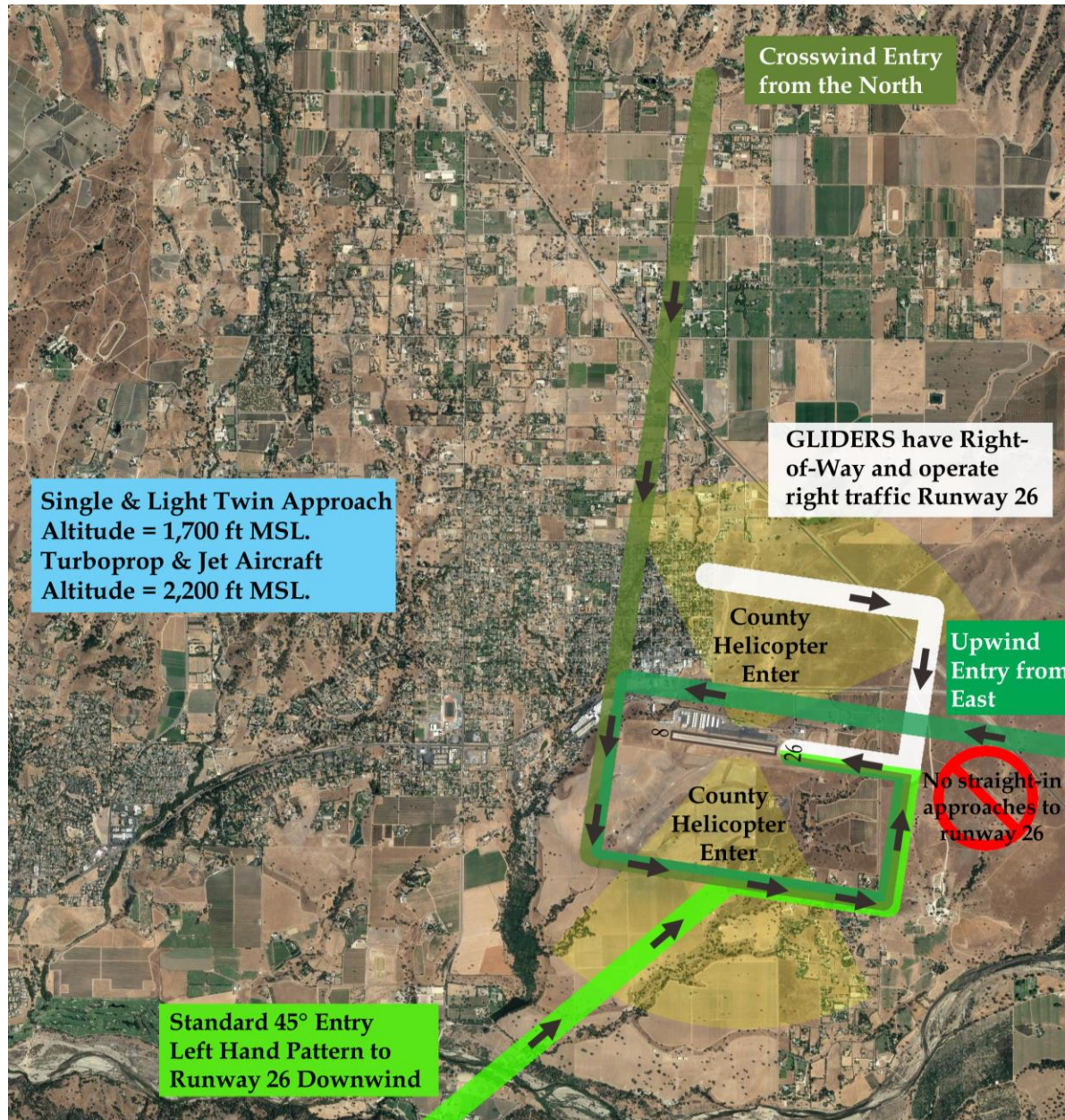


SANTA YNEZ VALLEY AIRPORT (KIZA) 674' MSL at 34.61°N/120.08°W

THE HEART OF SANTA BARBARA WINE COUNTRY

Welcome to Santa Ynez Valley Airport (KIZA) in the heart of Santa Barbara wine country. Located 16 nautical miles northwest of Santa Barbara Municipal Airport on the north side of the coastal Santa Ynez mountain range. Santa Ynez Valley Airport enjoys usually clear weather conditions as the valley is protected from coastal marine layer.



RUNWAY: 26/8 2,805 Feet usable. Los Angeles Sectional

GAVIOTA VOR (GVO 113.8) – R360 4.6NM

SAN MARCOS VOR (RZS 114.9) R277 16.2NM

RADIO FREQUENCIES:

KIZA CTAF – 122.80

KIZA AWOS – 118.075 (805-686-8903)

SANTA BARBARA APPROACH – 124.15 OR 125.40

LOS ANGELES CENTER – 119.05

PHONE NUMBERS:

KIZA AIRPORT MANAGER – 805-688-8390

CLEARANCE DELIVERY LOS ANGELES CENTER

661-575-2079

TRANSIENT PARKING TO THE EAST OF THE FUEL ISLAND.

100 LL & Jet A available 24 hours at fuel island

GLIDERS HAVE RIGHT-OF-WAY OVER POWERED AIRCRAFT

Fixed Wing Aircraft and Civilian Helicopters Approaching:

Traffic is to the south of the airport.

Aircraft approaching from North:

- 1) STANDARD ENTRY (Preferred): Overfly airport at 2,500 feet MSL to riverbed and return to enter standard left hand pattern @ 1,700 feet MSL (single engine) to runway 26 on a 45° entry to the downwind. Right traffic for runway 8.
- 2) CROSSWIND ENTRY (Alternate): Overfly hotel complex at west end at 1,700 feet MSL on crosswind entry for left traffic runway 26. Overfly runway 26-approach end on crosswind for right traffic runway 8. (Downwind altitude is 1,700 feet MSL). (Safety Note: Traffic on downwind or on 45° entry to the downwind have right of way over crosswind traffic).

Aircraft approaching from East:

- 1) Approaching aircraft may fly upwind traffic between the runway and Highway 246 (parallel and to the north of the airport) at 1,700 feet MSL and turn left crosswind for Runway 26 downwind.
- 2) Or, fly south of airport to riverbed and return to enter standard left hand pattern to runway 26 on a 45° entry to the downwind.

SAFETY, CAUTIONARY AND NOISE ABATEMENT NOTES

- No straight in approaches to Runway 26 during VFR conditions
- Turn to 210° at airport boundary for noise abatement when using Runway 26
- VFR & IFR departures use Runway 8 when conditions permit

Fixed Wing Aircraft Departing:

- 1) STANDARD EXIT: **After takeoff turn left to heading 210° until the riverbed** for noise abatement. There is a hotel complex, residential neighborhood, and high school within one mile of the departure end of Runway 26.
- 2) MIDFIELD CROSSOVER: Northbound departures may continue to make left 270° turn and cross airport on northbound heading after takeoff.

PUBLIC SAFETY HELICOPTER TRAFFIC:

Santa Barbara County Sheriff Air Support Unit helicopters are based at Santa Ynez Valley Airport and fly extensively day and night. Helicopters are based at the east end of the ramp and use an arrival/departure pattern on a direct north heading from the landing area. The helicopters additionally may use the taxiway and runway 26 for departures with a right pattern to the north of the airport.

Helicopters arriving from the south may enter a right crosswind with right traffic for the landing area from directly over the field at 1,000 feet AGL (1,700 feet MSL).

During emergency operations helicopters may use non-standard and non-published patterns.

GLIDER TRAFFIC:

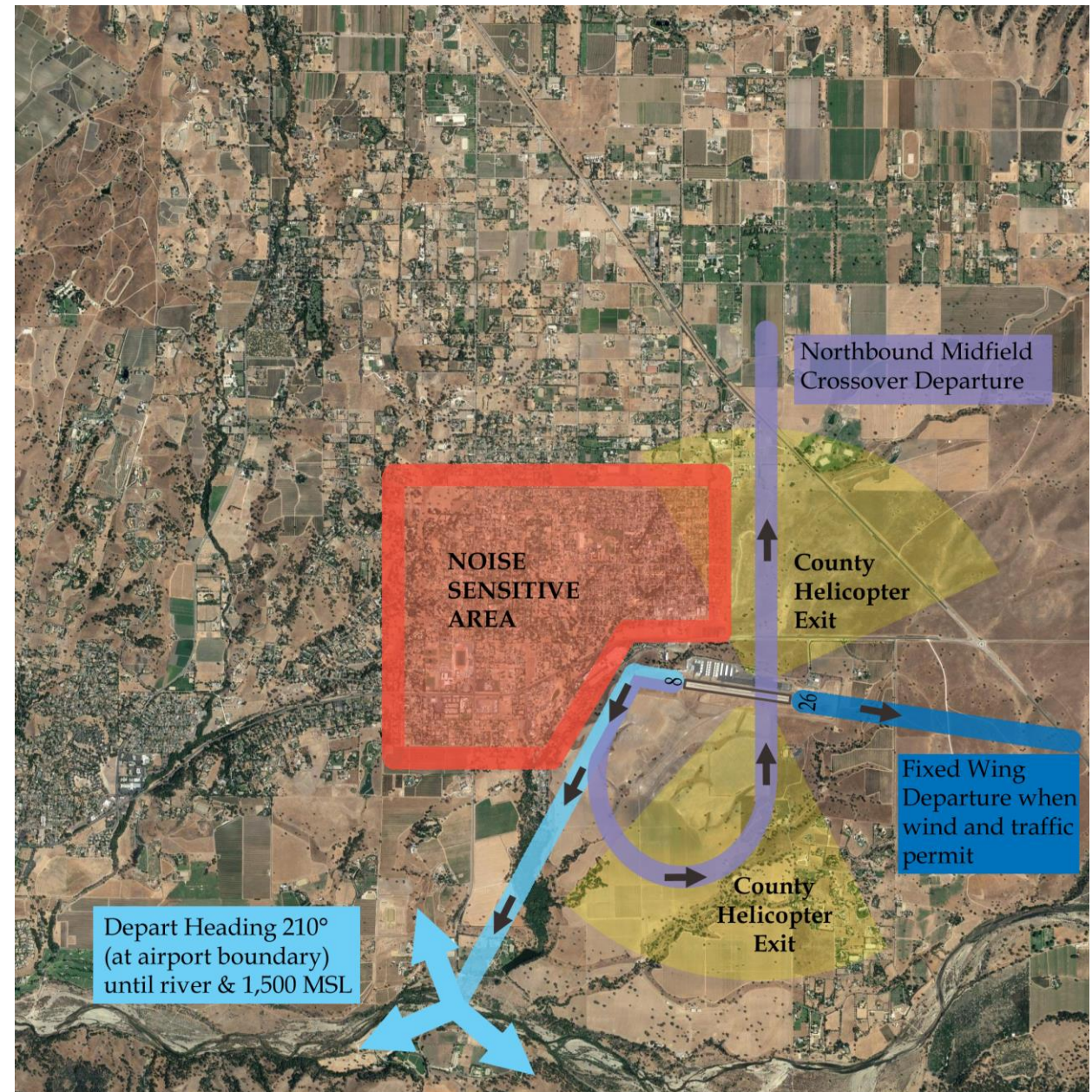
Gliders operate often at Santa Ynez Valley Airport. The glider port is at the far east end of the airport property. **Glider traffic is right traffic for runway 26** keeping gliders to the north of the runway. Gliders may fly crosswind entries from the south to north at 2,000 feet MSL.

ULTRALIGHT STRIP:

To the south of the glider port is a 900-foot dirt strip used by ultralight aircraft and some conventional gear aircraft for practice. Ultralight traffic uses a smaller left hand pattern at 500 feet AGL.

USEFUL CHECKPOINTS:

RIVER - >2NM SOUTH OF RUNWAY
WINERY – 1/4 MILE SOUTH OF RUNWAY 26
REFUGIO BRIDGE – 2 NM SOUTHWEST OF AIRPORT (USEFUL FOR 45° ENTRY TO RUNWAY 26 DOWNWIND)
BRADBURY DAM – 4.6NM EAST OF AIRPORT
SOLVANG – 3.8NM WEST OF AIRPORT
BUELLTON – 5.8NM WEST OF AIRPORT
LOS OLIVOS – 4NM NORTHWEST OF AIRPORT



FOR MORE INFORMATION:
WWW.SANTAYNEZAIRPORT.COM
WWW.VISITSYV.COM
WWW.SOLVANGUSA.COM

Consult Airport Facility
Directory for complete
information on KIZA