

# DEPARTMENT OF TRANSPORTATION

## Federal Aviation Administration

Southern California TRACON  
9175 Kearny Villa Road  
San Diego, CA 92126

Issued: 06/30/2022 1257 (UTC)  
Southern California TRACON

Effective: 06/30/2022 1200 (UTC)  
Letter to Airmen: LTA-SCT-53

Subject: WHP ONE ODP COMPLIANCE

Cancellation: 06/29/2024 1200 (UTC)

The Whiteman Airport (WHP) Obstacle Departure Procedure (ODP) "WHITEMAN ONE DEPARTURE (OBSTACLE)" has been flown incorrectly on many occasions.

The obstacle departure procedure requires departing IFR flights to intercept the VNY VOR 325° radial and track outbound (northwest bound) until reaching 4,600' MSL. Once reaching 4,600' MSL, the procedure then requires departing pilots to turn left, direct to VNY VOR continuing a climb to the appropriate MEA.

HOWEVER, some pilots that depart Runway 30 are turning to heading 260°, as expected, then **incorrectly** turning left to intercept the VNY VOR 325° radial inbound (southeast bound) violating and nullifying the procedure and its design to protect aviators from obstacles and terrain. This is a dangerous and improper application of the departure procedure.

Pilots are reminded to thoroughly review the IFR clearance to ensure they will be able to fully comply with all requirements of the clearance before departing.

**NOTE-** An annotated graphic of the procedure is attached. Always be sure you are using the most current publication for navigation and review all applicable NOTAMs.

Dale E. Ralph  
Air Traffic Manager, Southern California TRACON

19003

WHITEMAN ONE DEPARTURE (OBSTACLE)

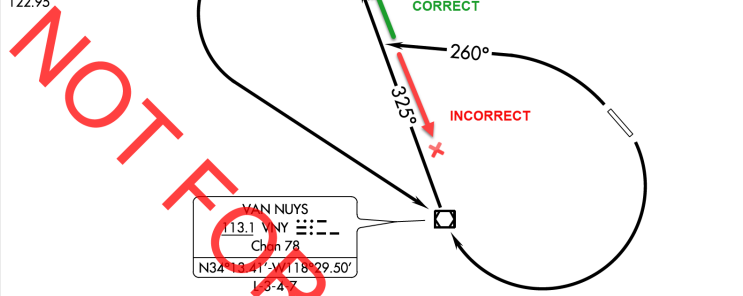
AL-9132 (FAA)

WHITEMAN (WHIP)  
LOS ANGELES, CALIFORNIA

ATIS  
132.1  
GND CON  
125.0  
WHITEMAN TOWER \*  
135.0 (CTAF)  
SOCAL APP CON  
120.4 360.6 (NORTH)  
134.2 338.2 (WEST)  
UNICOM  
122.95

TAKEOFF MINIMUMS

Rwy 12: 300-1¼ or standard with minimum climb of 292' per NM to 1300.  
Rwy 30: Standard with minimum climb of 366' per NM to 3400.



TAKEOFF OBSTACLE NOTES

Rwy 12: Pole beginning 34' from DER, 276' right of centerline, up to 20' AGL/979' MSL.  
 Building 180' from DER, 9' left of centerline, 22' AGL/978' MSL.  
 Tower, pole beginning 489' from DER, 278' right of centerline, up to 60' AGL/1012' MSL.  
 Stack 1 NM from DER, 1131' left of centerline, 250' AGL/1183' MSL.

Rwy 30: Pole 29' from DER, 277' left of centerline, 20' AGL/1024' MSL.  
 Pole 152' from DER, 282' left of centerline, 20' AGL/1025' MSL.  
 Pole 262' from DER, 282' left of centerline, 20' AGL/1027' MSL.  
 Pole 372' from DER, 283' left of centerline, 20' AGL/1028' MSL.  
 Pole beginning 482' from DER, 282' left of centerline, up to 20' AGL/1029' MSL.  
 Pole 703' from DER, 283' left of centerline, 20' AGL/1030' MSL.  
 Pole 812' from DER, 283' left of centerline, 20' AGL/1031' MSL.  
 Pole beginning 922' from DER, 283' left of centerline, up to 20' AGL/1032' MSL.  
 Pole 1141' from DER, 283' left of centerline, 20' AGL/1033' MSL.  
 Tower 1700' from DER, 511' right of centerline, 49' AGL/1075' MSL.  
 Tower 3532' from DER, 1118' right of centerline, 54' AGL/1098' MSL.

NOTE: Chart not to scale.

DEPARTURE ROUTE DESCRIPTION

TAKEOFF RUNWAY 12: Climbing right turn direct VNY VOR/DME, then on VNY R-325 to 4600, thence . . . .

TAKEOFF RUNWAY 30: Climbing left turn heading 260° and on VNY VOR/DME R-325 to 4600, thence . . . .

. . . . climbing left turn direct VNY VOR/DME to depart VNY VOR/DME at or above MEA for route of flight.

WHITEMAN ONE DEPARTURE (OBSTACLE)

24MAY18

LOS ANGELES, CALIFORNIA  
WHITEMAN (WHIP)

SW-3, 16 JUN 2022 to 14 JUL 2022

SW-3, 16 JUN 2022 to 14 JUL 2022