

DEPARTMENT OF TRANSPORTATION
Federal Aviation Administration

North Las Vegas Tower
3700 Thunderbird Field Rd.
North Las Vegas, NV 89032

Issued: 08/03/2022 1914 (UTC)
North Las Vegas Tower

Effective: 08/03/2022 2200 (UTC)
Letter to Airmen: LTA-VGT-5

Subject: NORTHTOWN (NOTWN) DEPARTURE

Cancellation: 08/03/2024 2159 (UTC)

The North Las Vegas Airport (VGT) NOTWN Standard Instrument Departure (SID) has been flown incorrectly on many occasions.

The SID requires departing IFR flights to make a **RIGHT** turn to intercept the LAS313° radial and track outbound until RUZCO. At RUZCO, the procedure then requires departing pilots to turn **RIGHT**, direct the LAS VOR continuing a climb to the ATC assigned altitude.

However, some pilots that depart Runway 25/30L/30R (heading 270°) or Runway 7/12L/12R (heading 250°) are turning heading 270°/250°, as expected, then incorrectly turning LEFT to intercept the LAS313° radial inbound (southeast bound) violating and nullifying the procedure and its design to protect aviators from obstacles, terrain, and Harry Reid departures. This is a dangerous and improper application of the departure procedure.

Pilots are reminded to thoroughly review their IFR clearance to ensure they will be able to fully comply with all requirements of the clearance before departing. Additionally, pilots should be prepared to fly the entire SID as published. Reliance on third party software that suggests shortcuts should be avoided.

Note- An annotated graphic of the procedure is attached. Always be sure you are using the most current publication for navigation and review all applicable NOTAMs.

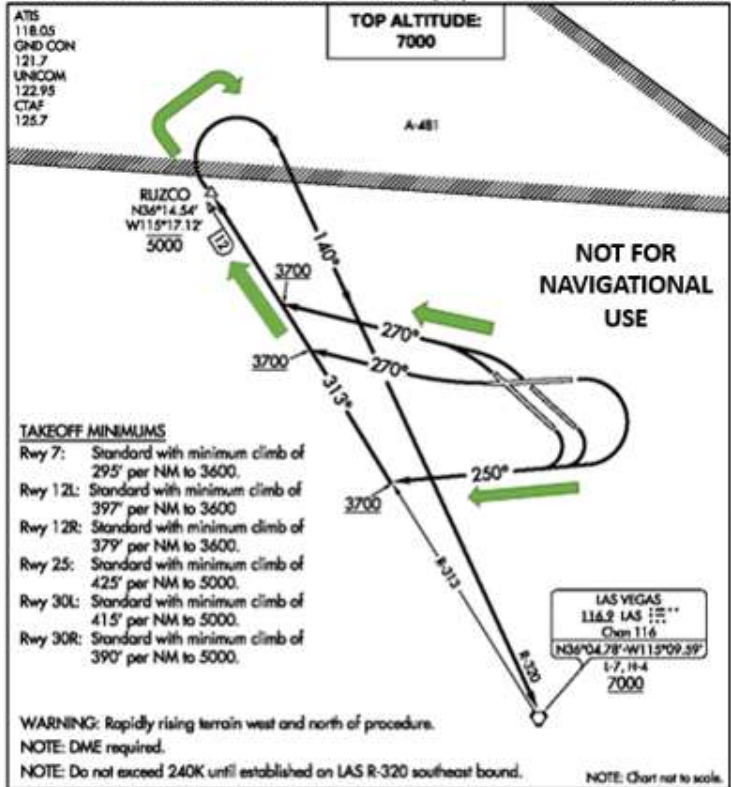
Adrienne Brown
Air Traffic Manager, North Las Vegas Tower

(NOTWNS.LAS) 18312

NORTHTOWN FIVE DEPARTURE

AL-6970 (FAA)

NORTH LAS VEGAS (VGT)
LAS VEGAS, NEVADA



V DEPARTURE ROUTE DESCRIPTION

TAKEOFF RUNWAYS 7, 12L/R: Climbing right turn on heading 250° to intercept LAS R-313 outbound at or above 3700, thence. . .

TAKEOFF RUNWAY 25: Climbing right turn on heading 270° to intercept LAS R-313 outbound at or above 3700, thence. . .

TAKEOFF RUNWAYS 30L/R: Climbing left turn on heading 270° to intercept LAS R-313 outbound at or above 3700, thence. . .

. . . on LAS R-313 outbound to cross RUIZCO/LAS 12 DME at or below 5000, then climbing right turn to intercept LAS R-320 to LAS VORTAC. Cross LAS VORTAC at or above 7000.

NORTHTOWN FIVE DEPARTURE

(NOTWNS.LAS) 08NOV18

LAS VEGAS, NEVADA

NORTH LAS VEGAS (VGT)