

SCAUWG CHART MASTER Candace Robinson

has been analyzing the LA Charts for years, and as chairman of the SCAUWG Charting committee has been responsible for not only noting chart changes; but also, for an amazing number of proposals submitted to the FAA that have resulted in better charting and increased LA AIRSPACE SAFETY.

Her analysis is aided by the SCAUWG.ORG ChartCompare Application created by SCAUWG Member Mike Carson

The following are her recent reports:

JULY 2023

SCAUWG REPORT July 11, 2023

LOS ANGELES TERMINAL AREA CHART -- CHANGES

The new edition of the Los Angeles Terminal Area Chart became effective June 15, 2023, and is valid until, August 10, 2023. The following changes have been found:

NAVIGATION SIDE OF CHART

April 20, 2023

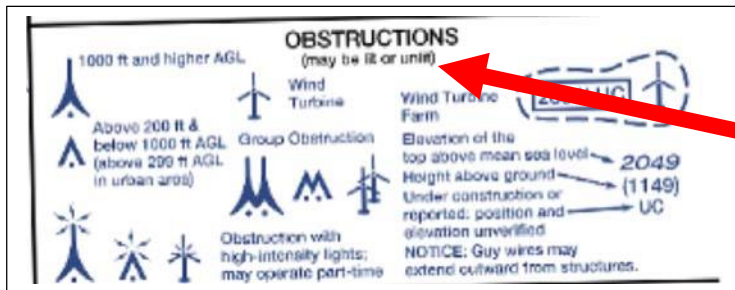
June 15, 2023

CHART LEGEND: COMMUNICATION BOXES

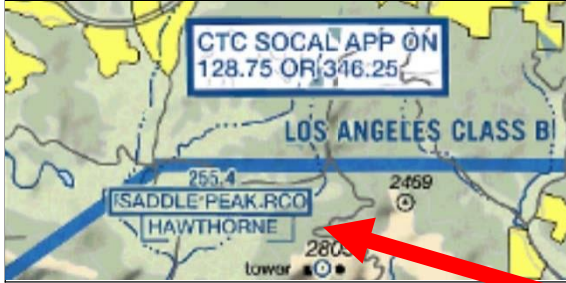
COMMUNICATION BOXES	COMMUNICATION BOXES
<p>1. Frequency above communication box: 122.1R 122.6 123.6 (OAKDALE)</p> <p>2. 122.6 Chicago CHI</p> <p><i>Heavy line box indicates Flight Service Station (FSS). Frequencies 122.2 and 255.4 (Conterminous U.S.) and 121.5, 122.2 243.0 and 255.4 (Alaska) are available at many FSSs and are not shown above boxes. All other frequencies are shown.</i></p>	<p>1. Frequency above communication box: 122.6 123.6 (OAKDALE)</p> <p>2. 123.6 Homer HOM</p> <p><i>Heavy line box indicates Flight Service Station (FSS). Frequencies 121.5, 122.2 and 243.0 are available at many Alaskan FSSs and are not shown above boxes. All other frequencies are shown.</i></p>

Previously, distinguished between Conterminous U.S. and Alaska. Revised to three frequencies for Alaska, only additional frequencies will be specified above the communication box.

CHART LEGEND: OBSTRUCTIONS



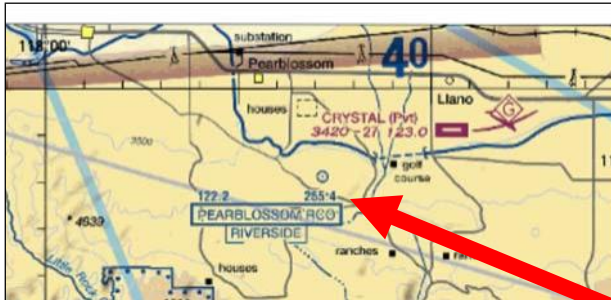
Latest chart revision added:
(may be lit or unlit)



Saddle Peak RCO removed from 3 nm north of Malibu VFR checkpoint

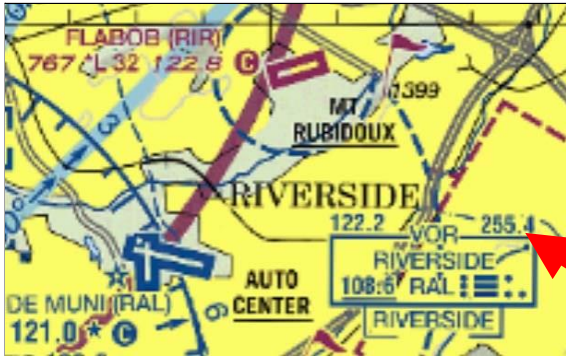
Translated: voice communications with the Hawthorne Flight Service Station are no longer available from Saddle Peak.

DELETED



Removed frequency 255.4 from Pearblossom RCO (Riverside), communication box is between 118 degrees, 0 minutes and 117 degrees, 45 minutes, along the top of chart and near Crystal private airport.

DELETED



Removed frequency 255.4 from Riverside FSS

DELETED

END OF REPORT

BTW

FOUND ON: FAA AVIATION SAFETY INFORMATION ANALYSIS AND SHARING (ASIAS) SYSTEM

www.asias.faa.gov

22 JUN 23	01:53:00Z	N854SN	PENDLETON	OREGON	INSITU INC/SCANEAGLE	INCIDENT	UNKNOWN	0	AIRCRAFT CRASHED WHILE ATTEMPTING TO RECOVER TO THEIR RECOVERY SITE, PENDLETON, OR.
21 JUN 23	16:44:00Z	N470PA	PENDLETON	OREGON	AMAZON/MK27-2	ACCIDENT	DESTROYED	0	AIRCRAFT MADE AN EMERGENCY LANDING IN A FIELD, PENDLETON, OR.

On June 21, 2023, an Amazon's Prime Air delivery drone, N470PA, was destroyed during an emergency landing in a field in Pendleton, Oregon.

On June 22, 2023, a Boeing Insitu ScanEagle UAS, N854SN, crashed while attempting to recover the drone.

LGB REPORT: Rehabilitate Runway 12-30 Update

Major electrical upgrades designed to improve the safety of Runway 12-30 have been underway since late March. In June, 180 new Touchdown Zone (TDZ) LED fixtures were installed. They're brighter, longer-lasting and more energy efficient than their predecessors. And a new, modern, navigational aid - Precision Approach Path Indicators (PAPI) – was commissioned for Runway 12-30. It's the most used navigational aid at Long Beach Airport!

As of the end of June:

- installed 506 new LED fixtures on Runway 12-30
- installed 160,000 linear feet of airfield cable and grounding wire – that equates to more than 1,200 Boeing 737s lined up tip to tail (or the distance from Long Beach Airport to the Huntington Beach Pier....and back!)
- placed more than 3,200 tons of asphalt concrete – that's equivalent to over two miles of a single lane road (or the weight of more than 70 Boeing 737s)

In July, work will include the installation of four new Constant Current Regulators (CCRs) in the airfield electrical vault to support the new centerline, edge, touchdown zone lights and PAPI; grooving the new asphalt concrete placed on the runway to increase skid resistance and reduce wet weather incidents; and refreshing the striping to a new, highly visible condition.

Runway 12-30 will be closed nightly, Sundays through Thursdays, through mid-July. Exact dates are subject to change, and details are available on the Airport's Current Noise Advisories webpage. As a reminder, during Runway 12-30 closures, operations will occur on Runway 8L26R (with a few exceptions when they will shift to 8R-26L).